

# MPX6

# MPX8

# MPX12

# MPX16

# 1 - Safety information

## Important safety information



This product contains non-isolated electrical components. Do not undertake any maintenance operation when it is switched on as it may result in electric shock.



This unit is intended for indoor use only. Do not use it in a wet, or extremely cold/hot locations. Failure to follow these safety instructions could result in fire, electric shock, injury, or damage to this product or other property.



Any maintenance procedure must be performed by a CONTEST authorised technical service. Basic cleaning operations must thoroughly follow our safety instructions.

## Symbols used



This symbol signals an important safety precaution.



The CAUTION symbol signals a risk of product deterioration.



The WARNING symbol signals a risk to the user's physical integrity. The product may also be damaged.

## Instructions and recommendations

### 1 - Please read carefully :

We strongly recommend to read carefully and understand the safety instructions before attempting to operate this unit.

### 2 - Please keep this manual :

We strongly recommend to keep this manual with the unit for future reference.

### 3 - Operate carefully this product :

We strongly recommend to take into consideration every safety instruction.

### 4 - Follow the instructions:

Please carefully follow each safety instruction to avoid any physical harm or property damage.

### 5 - Avoid water and wet locations :

Do not use this product in rain, or near washbasins or other wet locations.

### 6 - Installation :

We strongly encourage you to only use a fixation system or support recommended by the manufacturer or supplied with this product. Carefully follow the installation instructions and use the adequate tools.

Always ensure this unit is firmly fixed to avoid vibration and slipping while operating as it may result in physical injury.

### 7 - Ceiling or wall installation :

Please contact your local dealer before attempting any ceiling or wall installation.

### 8 - Ventilation :

The cooling vents ensure a safe use of this product, and avoid any overheating risk.

Do not obstruct or cover these vents as it may result in overheating and potential physical injury or product damage. This product should never be operated in a closed non-ventilated area such as a flight case or a rack, unless cooling vents are provided for the purpose .

### 9 - Heat exposure :

Sustained contact or proximity with warm surfaces may cause overheating and product damages. Please keep this product away from any heat source such as a heaters, amplifiers, hot plates, etc...

**CAUTION**  
**RISK OF ELECTRIC SHOCK**  
**DO NOT OPEN**

**WARNING :** This unit contains no user-serviceable parts. Do not open the housing or attempt any maintenance by yourself. In the unlikely even your unit may require service, please contact your nearest dealer.  
In order to avoid any electrical malfunction, please do not use any multi-socket, power cord extension or connecting system without making sure they are perfectly isolated and present no defect.

## Sound levels



Our audio solutions deliver important sound pressure levels (SPL) that can be harmful to human health when exposed during long periods. Please do not stay in close proximity of operating speakers.

## Recycling your device



- As HITMUSIC is really involved in the environmental cause, we only commercialise clean, ROHS compliant products.
- When this product reaches its end of life, take it to a collection point designated by local authorities. The separate collection and recycling of your product at the time of disposal will help conserve natural resources and ensure that it is recycled in a manner that protects human health and the environment.

### 10 - Electric power supply :

This product can only be operated according to a very specific voltage. These information are specified on the label located at the rear of the product.

### 11 - Power cords protection:

Power-supply cords should be routed so that they are not likely to be walked on or pinched by items placed upon or against them, paying particular attention to cords at lugs, convenience receptacles and the point where they exit from the fixture.

### 12 - Cleaning precautions :

Unplug the product before attempting any cleaning operation. This product should be cleaned only with accessories recommended by the manufacturer. Use a damp cloth to clean the surface. Do not wash this product.

### 13 - Long periods of non use :

Disconnect the unit's main power during long periods of non use.

### 14 - Liquids or objects penetration :

Do not let any object penetrate this product as it may result in electric shock or fire. Never spill any liquid on this product as it may infiltrate the electronic components and result in electric shock or fire.

### 15 - This product should be serviced when :

- Please contact the qualified service personnel if :
- The power cord or the plug has been damaged.
  - Objects have fallen or liquid has been spilled into the appliance.
  - The appliance has been exposed to rain or water.
  - The product does not appear to operate normally.
  - The product has been damaged.

### 16 - Inspection/maintenance :

Please do not attempt any inspection or maintenance by yourself. Refer all servicing to qualified personnel.

### 17 - Operating environment :

Ambient temperature and humidity: +5 - +35°C, relative humidity must be less than 85% (when cooling vents are not obstructed).

Do not operate this product in a non-ventilated, very humid or warm place.

## 2 - General features

- 2/4/8/12 microphone inputs via XLR plugs
- 2 stereo channels
- Compression on microphone channels
- USB/SD/Bluetooth player unit
- 48V phantom power on microphone channels
- 16 programs Multi-effect
- MASTER output with LED view-meter
- AC100-240V - 50/60Hz power supply

## 3 - Technical data

<b>Mono channels</b>	
<b>Microphone inputs</b>	Balanced
Frequency response	10Hz - 30KHz, +/-3dB
THD (THD&N)	0.03% @ +4dBu, 22Hz-20KHz pondéré A
Compression	Gain: 0-9dB, Threshold: 20dB 5dB
S/N ratio	115 dB
<b>Line inputs</b>	Balanced
Frequency response	10Hz - 30KHz, +/-3dB
THD (THD&N)	0.005% @ +4dBu, 22Hz-20KHz pondéré A
Maximum gain	75 dBu Mic input Master output
<b>Stereo channels</b>	
<b>Line inputs</b>	Balanced/Unbalanced
Frequency response	10Hz - 55KHz, +/-3dB
THD (THD&N)	0.005% @ +4dBu, 22Hz-20KHz A-weighted
<b>Impédances</b>	
Microphone inputs	1,4 K Ohms
Line inputs	10 K Ohms
Other inputs	10 K Ohms or more
Recording output	1 K Ohms
Other outputs	120 Ohms
<b>Mono channels EQ</b>	
High	+/-15dB @ 12 KHz
Mid	+/-15dB @ 2,5 KHz
Low	+/-15dB @ 45 Hz
<b>Stéréo channel inputs</b>	
High	+/-15dB @ 12 KHz
Low	+/-15dB @ 60 KHz
<b>Multi-effect</b>	24-bit analog-to-digital converter, 16 programs
Power supply	AC100-240V 50/60 Hz
Dimensions (L x L x E) / weight	MPX6 : 330 x 224 x 92 / 3,5 Kg MPX8 : 330 x 280 x 92 / 4 Kg MPX12 : 330 x 392 x 92 / 5,2 Kg MPX16 : 365 x 530 x 100 / 6,9 Kg

## 4 - Preparation

### Checking the package contents

The package must contain the following articles:

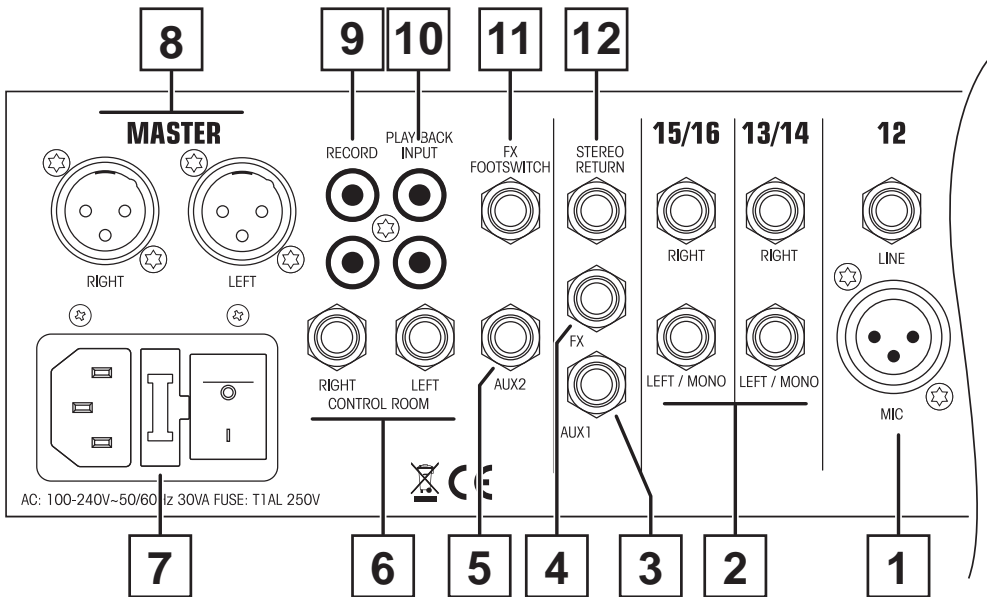
- Your MPX mixer
- The user guide
- 1 AC/DC power cable

### Installation

- Install your device over an even surface.
- Please make sure your mixer is set up in a ventilated area, unexposed to sun rays, excessive temperatures or humidity.

## 5 - Presentation

### Rear panel



#### 1 MIC/LINE inputs

- Balanced Mic input via XLR.
- Balanced line input via 6.35 TRS jack.

#### 2 Stereo inputs

Inputs on Jack 6.35. Input L(MONO) allows the same signal to be injected on both sides of the MAIN output

#### 3 AUX1 output

Balanced output on 6.35 TRS jack. The level of this output depends on the AUX1 SEND potentiometer.

#### 4 FX output

Balanced output on 6.35 TRS jack. The level of this output depends on the FX potentiometer on the front panel.

#### 5 AUX2 output (Only MPX16)

Balanced output on 6.35 TRS jack. The level of this output depends on the AUX2 SEND potentiometer.

#### 6 CONTROL ROOM output

Balanced outputs on 6.35 TRS jack. Allows you to send the result of the mix to monitors.

**7 Power supply socket**

Connect the supplied power cord here.  
Only use the supplied power cord or equivalent cords.

**8 Balanced MASTER output**

This balanced XLR stereo output allows you to carry sound signals over long distances without quality losses. This is the best system for sound processing with balanced outputs. The volume of this output can be adjusted via the MASTER fader.

**9 Record output**

Allows you to connect a recording system to your console.

**10 PLAYBACK INPUT**

Unbalanced input via RCA plugs. Allows to inject a signal from a line level source (CD player, computer... etc).

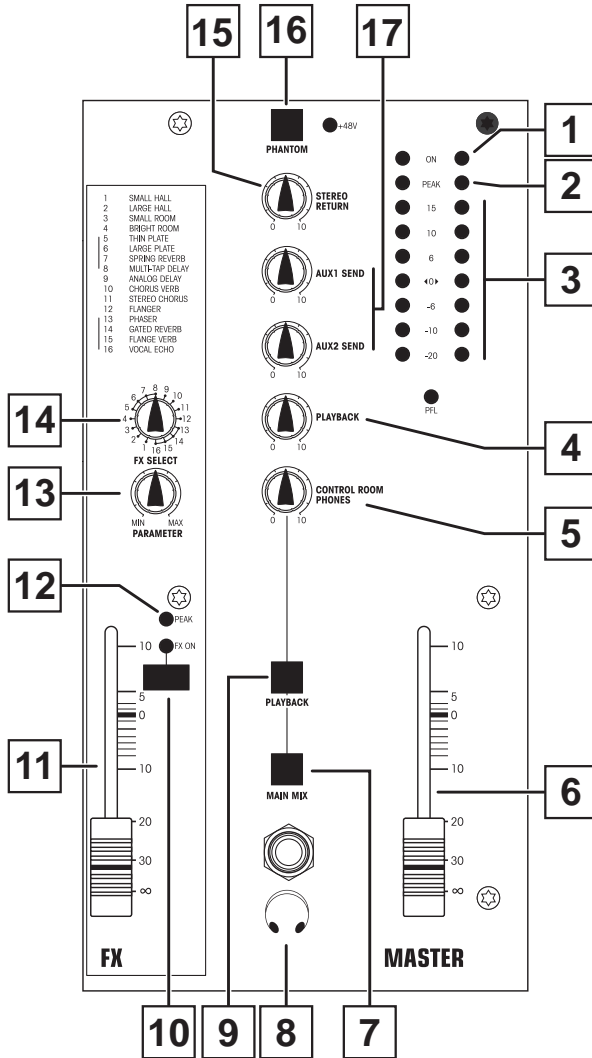
**11 FX FOOTSWITCH (MPX16 only)**

This input allows you to connect a foot remote control that activates or deactivates the multi-effect. This command is a dry contact.

**12 STEREO RETURN output**

This input is used to retrieve the signal from an external box (reverb, flanger,...etc). The level of this input is adjustable via the STEREO RETURN potentiometer.

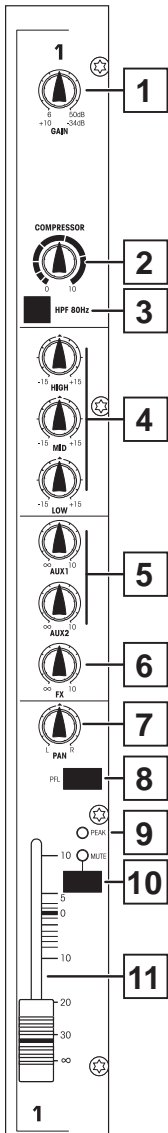
Section MASTER



- 1 ON LED**  
Cette LED s'allume lorsque la console est sous tension.
- 2 PEAK LED**  
This LED lights up when the signal reaches the clipping level.
- 3 Vu-meter**  
Allows you to view the level of the MASTER signal.

- 4 PLAYBACK setting**  
This potentiometer is used to adjust the level of the PLAYBACK INPUT.
- 5 CONTROL ROOM PHONE setting**  
This potentiometer is used to adjust the level of the headphone output and CONTROL ROOM outputs.
- 6 MASTER setting**  
This potentiometer is used to adjust the level of the PLAYBACK INPUT input.
- 7 MAIN MIX switch**  
Sends the MASTER signal to the headphone output and CONTROL ROOM outputs.
- 8 Headphone output**
- 9 PLAYBACK Switch**  
Sends the signal present on the PLAYBACK INPUT input to the headphone output and to the CONTROL ROOM output.
- 10 FX ON button**  
Activates the multi-effect.
- 11 FX setting**  
Allows you to adjust the level of the multi-effect.
- 12 PEAK LED**  
This LED lights up when the multi-effect level has reached the clipping level.
- 13 PARAMETER setting**  
Allows you to adjust the effects.
- 14 FX SELECT selector**  
Allows you to select effects.
- 15 STEREO RETURN setting**  
Allows you to adjust the level of the STEREO RETURN input.
- 16 Phantom switch**  
Enables phantom power on MIC/LINE channels.
- 17 AUX1 SEND and AUX2 SEND setting**  
Allows you to adjust the signal levels sent to the AUX1 and AUX2 outputs. Only the MPX16 console is equipped with two AUX outputs.

## MONO channels

**1 MIC/LINE gain potentiometers**

These control knobs allow you to adjust the input level on each channel. Adjusting the input level is crucial to produce a perfect sound quality. High input levels might create sound distortions which may damage your amplifiers and speakers.

**2 COMPRESSOR setting**

It adjusts channel compression. Turn clockwise to increase compression ratio and gain will adjust automatically.

**3 HPF switch**

It turns on/off the HPF with 18 dB/octave to activate 80 Hz LF filter. You can also use it to reduce mains hum noise or stage mic noise.

**4 Equalization**

Each channel features a 2-way equalizer. These control knobs can increase or decrease low frequencies (LOW) or trebles (HIGH) of the output signal.

- **HIGH** (High Frequency control): Allows you to adjust the trebles volume from +15 and -15 dB at 12kHz. Turn it clockwise to increase the volume, counterclockwise to decrease the volume.

- **MID** (Middle Frequency control): Allows you to adjust the middle volume from +15 and -15 dB at 2.5kHz. Turn it clockwise to increase the volume, counterclockwise to decrease the volume.

- **LOW** (low frequency control): Allows you to adjust the basses volume from +15 and -15 dB at 80Hz. Turn it clockwise to increase the volume, counterclockwise to decrease the volume..

**Caution:** These settings may affect the clip level.

**5 AUX1 et AUX2 settings**

This buttons adjust the signal level of each channel that will be sent to the AUX bus. Only the MPX16 console is equipped with 2 AUX.

**6 FX setting**

This setting is used to adjust the amount of effect injected into the channel.

**7 PAN setting**

This setting allow you to adjust the amount of signal sent to the right or left side of the MASTER output.

**8 PFL switch (MPX16 only)**

Allows you to listen and isolate one or more channels in the monitoring bus and not in the main output of the mixer. The position of the fader has no effect on the PFL.

**9 PEAK LED**

This LED lights up when the multi-effect level has reached the clipping level.

**10 MUTE switch**

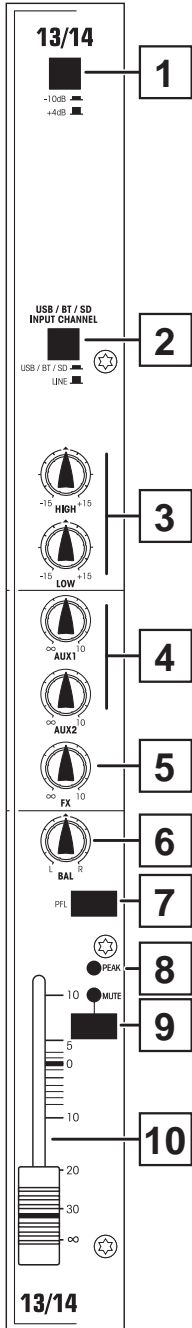
Allows to mute the channel. When the track is switched off, the MUTE LED lights up.

**11 Level potentiometer**

It adjusts the level of channel signal which is sent to main mix out.

Note: set the unused faders to minimum position.

## STEREO channels

**1 -10dB / +4dB switch**

When pressed, this switch increases the channel sensitivity by 10 dB.

**2 USB / BT / SD switch**

This switch allows you to switch between the analog channel and the MP3/BT player.

**3**

Each channel features a 2-way equalizer. These control knobs can increase or decrease low frequencies (LOW) or trebles (HIGH) of the output signal.

- **HIGH** (High Frequency control): Allows you to adjust the trebles volume from +15 and -15 dB at 12kHz. Turn it clockwise to increase the volume, counterclockwise to decrease the volume.

- **LOW** (low frequency control): Allows you to adjust the basses volume from +15 and -15 dB at 60Hz. Turn it clockwise to increase the volume, counterclockwise to decrease the volume.

**Caution:** These settings may affect the clip level.

**4 AUX1 et AUX2 settings**

This buttons adjust the signal level of each channel that will be sent to the AUX bus.

Only the MPX16 console is equipped with 2 AUX.

**5****FX setting**

This setting is used to adjust the amount of effect injected into the channel.

**6****BAL setting**

This settings allow you to adjust the right and left levels of inputs sent to the MASTER output.

**7****PFL switch (MPX16 only)**

Allows you to listen and isolate one or more channels in the monitoring bus and not in the main output of the mixer. The position of the fader has no effect on the PFL.

**8****PEAK LED**

This LED lights up when the multi-effect level has reached the clipping level.

**9****MUTE switch**

Allows to mute the channel. When the track is switched off, the MUTE LED lights up

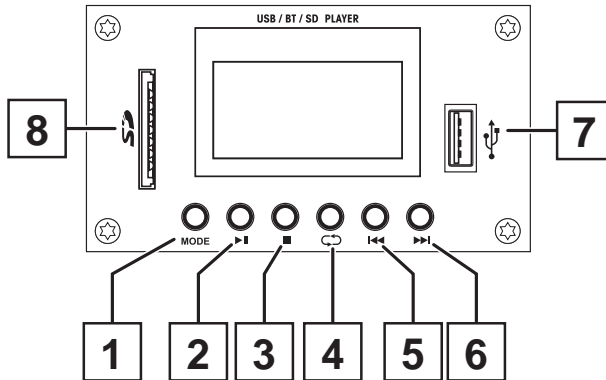
**10****Level potentiometer**

It adjusts the level of channel signal which is sent to main mix out.

Note: set the unused faders to minimum position.



## Lecteur SD/USB/BLUETOOTH

**1 MODE button**

This button is used to select the type of playback:

SD/USB, insert the appropriate media to start playback directly.

BLUETOOTH: Pair your Bluetooth device by pressing Play/Pause and start playback.

**2 ►|| button**

Starts or suspends playback.

**3 ■ button**

Stops playback.

**4 ↺ button**

Allows several repeat playback modes:

- **1** : Play one chosen track on loop (repeat) Note in this mode individual tracks cannot be selected.
- **F** : Play all tracks within same folder on your SD card or USB drive in sequence on loop.
- **R** : Plays all tracks in random order without repetition.
- **A** : Plays all tracks in a loop

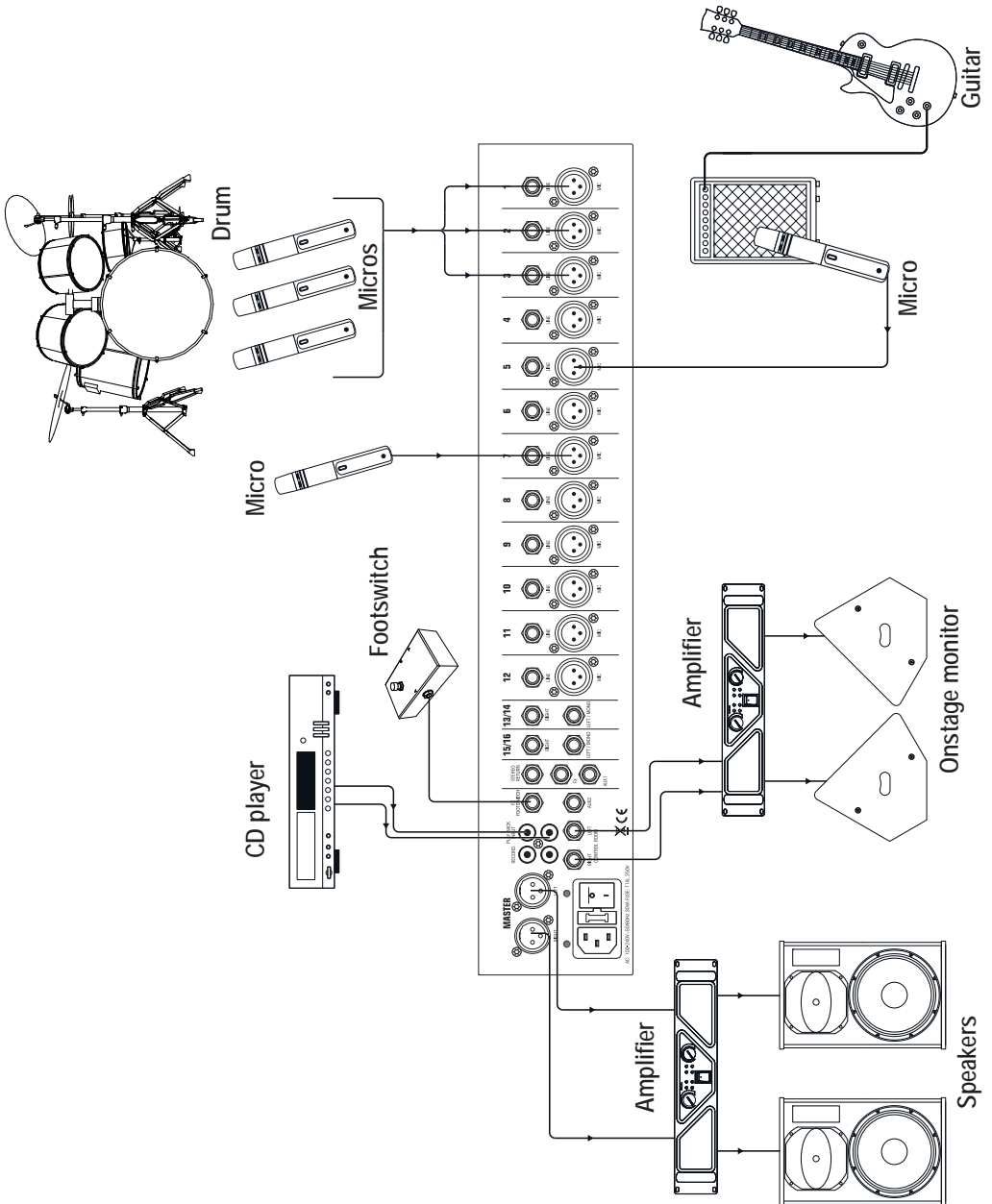
**5 ◀◀ button**

Allows you to switch to the previous track, change the mode and reduce the volume when a track is playing.

**6 ▶▶ button**

Allows you to move to the next track, change the mode and increase the volume when a track is playing.

## 6 - Typical installation



Because AUDIOPHONY® takes the utmost care in its products to make sure you only get the best possible quality, our products are subjects to modifications without prior notice. That is why technical specifications and the products physical configuration might differ from the illustrations.

Make sure you get the latest news and updates about the AUDIOPHONY® products on [www.audiophony.com](http://www.audiophony.com)  
AUDIOPHONY® is a trademark of HITMUSIC S.A.S - Zone Cahors sud - 46230 FONTANES - FRANCE